

# Voters' Checklist

- ☑ You can register to vote by mail.
- ☑ You may vote by Absentee Ballot.
- ☑ Most polling places are wheelchair accessible.
- ☑ You may find information about voting and elections via the website or toll free TDD relay.
- ☑ Contact the Department of Elections for your County directly if you require assistance at your voting site.
- ☑ Feel free to bring your own assistant with you to the polls.



Every Citizens has a  
right to vote.

## State of Delaware Department of Elections

### COMMISSIONER

905 S. Governors Ave., STE 170  
Dover, DE 19904  
Phone: (302) 739-4277  
Fax (302) 739-6794  
Email: [Coe\\_vote@state.de.us](mailto:Coe_vote@state.de.us)  
Website: [www.elections.delaware.gov](http://www.elections.delaware.gov)

### KENT COUNTY

100 Enterprise Place, Suite 5  
Dover, DE 19904  
Phone: (302) 739-4498  
Fax: (302) 739-4515  
Website: <http://electionskc.delaware.gov>

### NEW CASTLE COUNTY

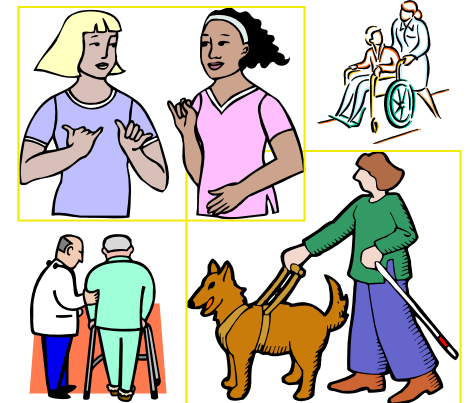
Carvel State Office Building  
820 N. French St., 4<sup>th</sup> Floor  
Wilmington, DE 19801  
Phone: (302) 577-3464  
Fax: (302) 577-6545  
Website: <http://electionsncc.delaware.gov>

### SUSSEX COUNTY

119 N. Race St.,  
P.O. Box 457  
Georgetown, DE 19947  
Phone: (302) 856-5367  
Fax: (302) 856-5082  
Website: <http://electionssc.delaware.gov>

## State of Delaware Department of Elections

# *Voting for Citizens with Special Needs*



# Voters with Special Needs

All people qualified and desiring to vote must be given the opportunity to do so. It is the goal of the State of Delaware to provide all citizens with any necessary assistance to make that happen. As such, the State is committed to providing its citizens with the following:

- Accessible polling places.
- Accessible voting machines.
- Voting by Absentee Ballot.
- Assistance at any point as a means of accommodation.

## Registration



You may register to vote by mail by requesting that the Department of Elections for your County mail an application to you. You may also register in person at the Division of Motor Vehicles, a State Service Center or the Department of Labor when receiving services or the Department of Elections for your County.

## Absentee Voting

Voters who have temporary or permanent disabilities qualify to cast an Absentee Ballot. Registered Delaware voters with permanent or temporary physical disabilities do not have to have their Application for an Absentee Ballot notarized.

## Election Day Assistance



The State of Delaware provides handicapped accessible polling places and voting machines. Voters with special needs can inform the Election Officers at the polls, who are ready to provide assistance upon the voter's arrival. Voters with special needs may also bring someone with them to help in the voting process. Voters who believe that their polling place is not accessible to them should contact the Department of Elections for their County before the day of the election to make other arrangements to vote.

## Voting Aids



For voters who are deaf or hard of hearing, all election materials, announcements and forms are available on the Internet at [www.elections.delaware.gov](http://www.elections.delaware.gov).

You may also use the State's free TDD relay service to obtain election and voting information. Simply dial

"711" and give the operator the toll free help line number for the County from which you are calling:

New Castle County 577- 3000

Kent County 800-464-4357

Sussex County 800-464-4357

Outside Delaware 800-273-9500

## Voters Without Fixed Residences

Anyone lacking a fixed residence or who is homeless and is otherwise qualified to vote in Delaware may register by completing the proper registration forms and providing two pieces of identification containing his/her name; one of the pieces must include the mailing address on the application, which may be a shelter or agency.



Every Citizen has a right to vote.

## State of Delaware Office of the State Election Commissioner

905 S. Governors Ave., STE 170

Dover, DE 19904

Phone: 302-739-4277

Fax: 302-739-6794

Email: [COE\\_vote@state.de.us](mailto:COE_vote@state.de.us)

Website: [www.elections.delaware.gov](http://www.elections.delaware.gov)