

# Absentee Voting Checklist

- Submit an Affidavit for Absentee Ballot as far in advance of an election as allowable.**
- Read the Absentee Ballot instructions carefully .**
- Complete the Absentee Ballot and follow the instructions for returning it. Make sure that you sign and date the Ballot Envelope.**
- Return your Absentee Ballot as soon as possible after you receive it.**
- All Absentee Ballots must be received no later than Noon on the day prior to the election.**
- If you are a member of the military or living overseas, see the brochure entitled "Voting while you are in the Military or Living Overseas."**



You can vote by Absentee Ballot if you are away due to work, school, religion, vacation, illness or disability

## State of Delaware Departments of Elections

### COMMISSIONER

111 S. West St., Suite 10  
Dover, DE 19904  
Phone: (302) 739-4277  
Fax (302) 739-6794  
Email: [Coe\\_vote@state.de.us](mailto:Coe_vote@state.de.us)  
Website: [www.elections.delaware.gov](http://www.elections.delaware.gov)

### KENT COUNTY

100 Enterprise Place, Suite 5  
Dover, DE 19904  
Phone: (302) 739-4498  
Fax: (302) 739-4515  
Website: <http://electionskc.delaware.gov>

### NEW CASTLE COUNTY

Carvel State Office Building  
820 N. French St., 4<sup>th</sup> Floor  
Wilmington, DE 19801  
Phone: (302) 577-3464  
Fax: (302) 577-6545  
Website: <http://electionsncc.delaware.gov>

### SUSSEX COUNTY

119 N. Race St.,  
P.O. Box 457  
Georgetown, DE 19947  
Phone: (302) 856-5367  
Fax: (302) 856-5082  
Website: <http://electionssc.delaware.gov>

## State of Delaware Departments of Elections

# Absentee Voting: *How to Vote When You Can't Go to the Polls*



# Absentee Voting

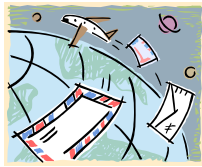
Work/School/Religion/Vacation/Illness/Disability

If you are a registered voter in your Election District, but you are unable to appear at the polls to vote in person for a reason stated in the law, you are eligible to vote by Absentee Ballot. Absentee Ballots may be used for the following reasons:

- Your business or occupation prevents you from coming to the polls (this includes students)
- You are on vacation
- The tenets or teachings of your religion prevent you from coming to the polls
- You are experiencing a temporary or permanent physical disability
- You are in the public service of the United States or the State of Delaware and are unable to come to the polls

## Eligibility to Vote by Absentee Ballot

You must be registered to vote in Delaware before you can use an Absentee Ballot. Those who are registered to vote in Delaware must first submit a completed Affidavit for Absentee Ballot to the Department of Elections for the County in which they live. You may



You must be registered to be eligible to vote.

obtain an Affidavit for the Department of Elections for your County or from the Commissioner of Elections web site.

Submit your Affidavit for Absentee Ballot to the Department of Elections for your County as early as possible before the election. Certain categories of voters must have



the Affidavit notarized. Be sure to check the Affidavit to see if this applies to you. You will only be able to vote in a Democratic primary if you are a registered Democrat and a Republican primary if you are a registered Republican.

The Affidavit can be used to make any changes in your name, address or party affiliation.

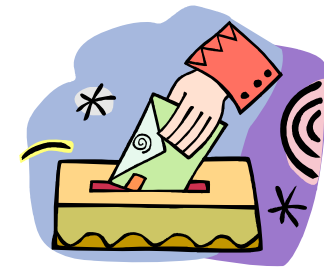
## Voting by Absentee Ballot

You may vote by Absentee Ballot in person, at the Department of Elections for your County or by mail. To vote in person, contact the Department of Elections for your County or by mail. To vote in person, contact the Department of Elections for your County to determine when Absentee Ballots will be available and the hours for voting. Be sure to take proof of identity with you when you go to vote. For those voting by mail, the Department of Elections for your County will mail your

Absentee Ballot to you as soon as they are available. This is usually about 35 days prior to a Primary Election and 45 days prior to a General Election.

Read and follow the instructions for completing and returning your Absentee Ballot. Put the Absentee Ballot in the Ballot Envelope, seal it and sign it.

If the Absentee Ballot is sent via a foreign postal system, send by Air Mail and use the required foreign postage. Absentee Ballots must be received by the Department of Elections for your County no later than close of the polls on the day of the election.



COMMISSIONER  
111 S. West St., Suite 10  
Dover, DE 19904  
Phone: (302) 739-4277  
Fax (302) 739-6794  
Email: [Coe\\_vote@state.de.us](mailto:Coe_vote@state.de.us)  
Website: [www.elections.delaware.gov](http://www.elections.delaware.gov)